



College Park School

Federation of Westminster Special Schools

Prospectus



Content

03	Message from Acting Headteacher
04	Our Mission & Vision
05	Our Facilities
06	Our Curriculum & Creative Art
07	Admissions Criteria
08	Partnerships and Community links
09	Governors
10	Testimonials

Message from Acting Headteacher



Welcome to the Federation of Westminster Special Schools, Training & Outreach Service.

We are a federated group of two special schools, Queen Elizabeth II Jubilee School (for pupils with severe, profound and multiple learning difficulties) and College Park School (for pupils with autism and complex learning needs in the moderate range), as well as a Training and Outreach Service.

The Federation was created in January 2012 between the two special schools. In the intervening years we have developed our Training and Outreach Service, offering training, advice and support to mainstream schools. The team is based at Queen Elizabeth II Jubilee School. More recently, we have opened the Kennet West Skills Centre on the QEII site, in partnership with Westminster Kingsway College, which provides vocationally focused education for young people ages 16 to 19. Together, the Federation aims to provide high quality specialist provision for children and young people aged 4 – 19, as well as offering unique opportunities for professional development to a wide range of interested parties.

College Park School is located in a purpose-built site on Garway Road in Westminster. Our school prides itself with a rich and diverse creative arts curriculum that enables pupils to reach their potential through expression and creativity.

As the school caters for pupils with Special Educational Needs, the Local Authority must be satisfied that this school will best meet your child's needs. We are also committed to helping them achieve their best in terms of their learning, independence and confidence and to support and prepare them for the next step in their education and for adult life. We do this in partnership with the many professionals and other organisations that we work with but, most importantly, we aim to work in close partnership with parents and carers who know their children best.

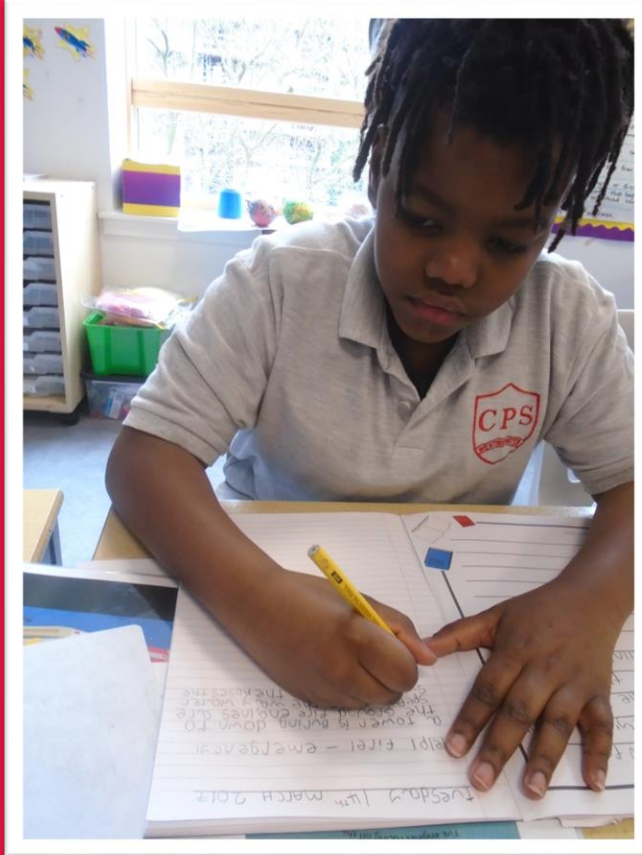
We hope you will find this prospectus helpful in providing information about the Federation and College Park, and that it fulfils its purpose of enabling parents, carers and professionals to gain an insight into the education and care that we provide. We know that our website probably will not answer all your questions. You are therefore most welcome to contact the school for further information. If you would like to visit our school please contact our Reception for our open days.

A handwritten signature in black ink that reads "Claire Shepherd".

CLAIRE SHEPHERD
Acting Headteacher

Mission & Vision Statement

Federation of Westminster Special Schools and the Training and Outreach Service



Our Mission

Federation of Westminster Special Schools and the Training and Outreach Service, aims to be a centre of excellence for delivery of dynamic and creative special education to pupils, staff, parents, mainstream schools and the community.

Our Vision

Is for the Federation of Westminster Special Schools and the Training and Outreach Service to be renowned as a leading provider for special education with commitment, drive, ambition and passion focusing on:

- Integrating all aspects of pupil's learning and development,
- Excellent and creative teaching leading to meaningful outcomes
- High expectations of achievements for all
- High quality support to mainstream and other special schools resulting in positive inclusive practice

We will achieve this by:

- Creating a learning environment which is safe yet exciting, positive and encouraging, respectful and understanding, inclusive and aspirational promoting health and wellbeing as fundamental to achievement
- Promoting high standards in teaching, learning and leadership through rigorous self-evaluation and shared accountabilities for continuous school improvement
- Effective use of resources, ensuring the money is well spent
- Encouraging all members of the federation to reach their potential
- Valuing the contribution of all, building confidence and self-belief
- Providing a creative, integrated and holistic approach to supporting pupils in developing their knowledge and understanding of the world
- Preparing all pupils for their future role in adult life with successful transitions
- Working in partnership with parents and other professionals both within and beyond the school, including increased involvement with the wider local community
- Moving forward together, ensuring pupils, their families and federation staff achieve the best they can with the opportunities and support available.



Our Facilities

Westminster Federation of Special Schools Outreach and Training Services



College Park offers excellent educational facilities which include a Digitized Sensory Room mainly used to support pupil's experiencing a more sensory curriculum.

We offer a Youth Room used for breakfast and which also provides refreshments for parent's coffee mornings and other meetings, and a School Hall with hard-wood floor. The pupils not only use the Gym for PE, but it is also used for after-school activities and events.

We have a Food Technology room where pupils practice their cooking and housekeeping skills, a dedicated Computing suite with a range of PC based systems which complement the computer banks found in some classrooms, and a dance studio with a sprung floor.



Our Curriculum

Westminster Federation of Special Schools Outreach and Training Services

The curriculum at College Park School is based on the notion that each learner has a right to access a personalized and meaningful curriculum. We aim to create an environment where we can support learners to be happy, engaged and interact in a positive and meaningful way.

We implement the framework of the Equals Semi-Formal Curriculum and amended National Curriculum to meet the needs, levels and learning styles of all our learners. Our curriculum is topic informed and we focus on the core skills of communication, independence, wellbeing and thinking.

In order to fully support our learners in school and in a wider community, we use different, recognized approaches including TEACCH, SCERTS, Intensive Interaction, Makaton and Attention Autism.



Find out more about our curriculum on the Curriculum, Teaching, and Learning pages on our [website](#).

Creative Arts

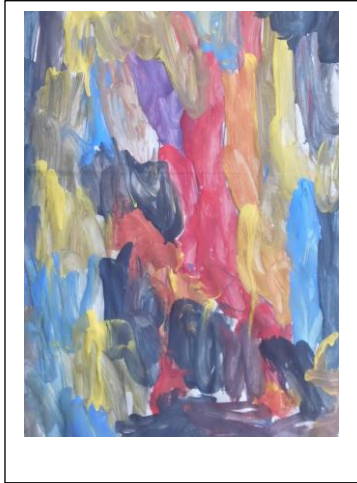
The Creative Arts at College Park comprise of Art, Music, Dance, and Drama. College Park has a dedicated art room and a shared performing arts studio. The subjects are taught thematically and are a great vehicle for exploring the various cultures that make up the school and are representative of the schools exciting central London location.

Alongside a rich curriculum offer all students access a curriculum that is appropriate to their needs. We have an informal and formal curriculum offer. The Creative Arts offer the students to develop a sense of self and autonomy and to make choices and problem solve. As the students develop and progress through the school the curriculum develops to meet their needs. Some students will progress to accreditation in the creative arts, accessing qualifications that are both meaningful and challenging. These include Arts Award, Entry level and GCSE.

College Park is the lead school in the West London Inclusive Arts Festival and kindly funded by the [John Lyon's Charity](#). The festival is a partnership of six special needs schools and six cultural partners. The festival informs the spring and summer curriculum with a number of events and performances.

We celebrate all pupils' work through assemblies, displays, exhibitions, and on our School [website](#)





Admissions Criteria

Parents who would like to find out more about the schools are welcome to telephone to book a place on one of our Open Days. Please call the school office on 020 7221 3454 or email us on admin@qe2cp.westminster.sch.uk for more information. Senior staff will be delighted to meet you and explain the work of the school.

The Federation of Westminster Special Schools caters for a wide range of special education needs within two schools, Queen Elizabeth II Jubilee School and College Park School. Both schools cater for children and young people between the ages of 4 and 19 years.

College Park School caters for children and young people between the ages of 4 and 19 years who have autism and complex learning needs within the moderate to severe range.

For more information for admissions procedure and protocols for College Park School, please refer to the policy on the school website.



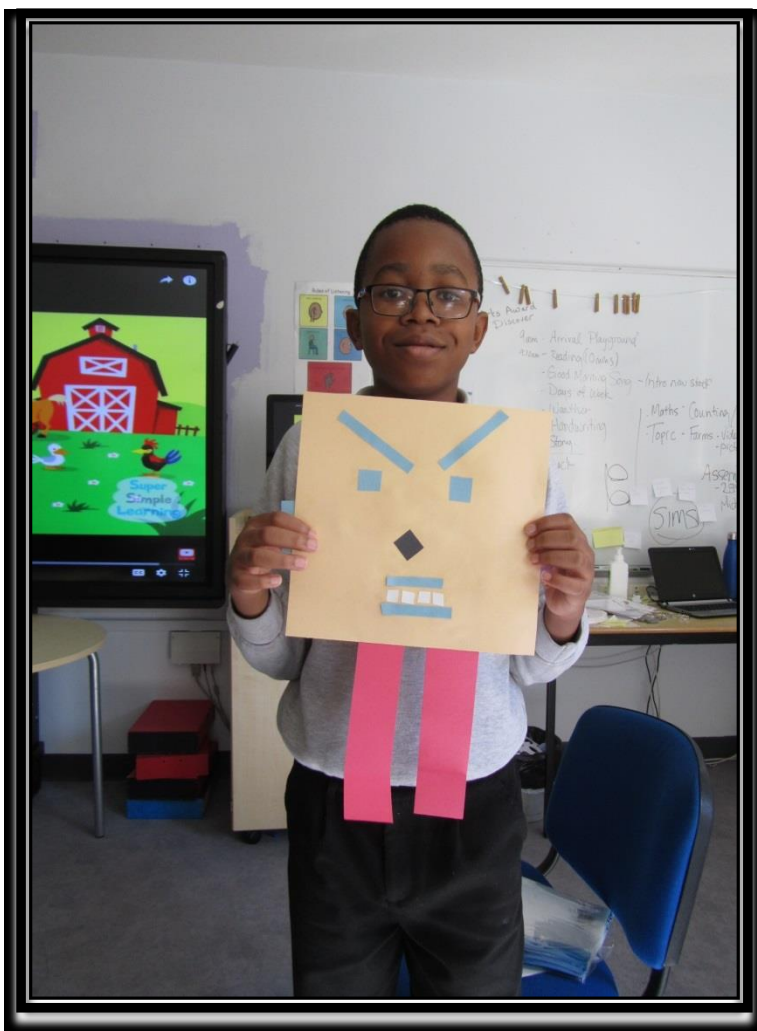
Partnerships and Community links

Westminster Federation of Special Schools Outreach and Training Services

As a parent, you are very important to us. We very much welcome your contribution to our work and look forward to a close relationship with you. We offer families support, information, training, and practical help.

Informal dialogue is encouraged usually by means of Home/School Planners although some parents prefer to communicate via email. Staff will write brief messages in the Planners and parents are asked to write back and let us know what has been happening at home in the evening or at weekends.

We have links within the local and greater London community. We use a number of organisations and community facilities as well as local businesses in the Westminster area. We have partnerships with theatre companies, local parks organisations, and a number of businesses which host work experience for our secondary and Post-16 pupils.



Governors

Westminster Federation of Special Schools Outreach and Training Services

College Park School has a shared governing body that is also responsible for Queen Elizabeth II Jubilee School.

The Governors are similar to Directors in a business or Trustees in a charity, and act as 'critical friends' to the Acting Headteacher, Claire Shepherd, and Senior Leadership Team. Governors work with the Acting Headteacher of School on strategic and developmental issues, and make the tough decisions about balancing resources and improving the quality of provision.

Governors visit the schools to meet members of the Senior Leadership Team and to carry out their responsibilities in terms of monitoring and providing oversight.

School Governors have legal duties, powers and responsibilities; they can act only together, they cannot act individually.

The Federation Governing Board comprises:

- The Acting Headteacher
- One elected Staff Governor
- Two elected Parent Governors
- One Local Authority nominated Governor
- Seven co-opted Governors who are recruited for the skills, knowledge and experience which they can contribute to the Governing Board and the Federation.



Parent Governors:

- Have a child in the school
- Are elected by parents of children in the school
- Serve four years as do other Governors

Parent Governors bring the views of parents to the Governing Body but they speak and act as individuals. They help to make sure that all communication with parents is informative, easy to read and free from jargon. They have equal status to the other Governors and have voting rights.

The chair of Governors leads, manages and supports Governors as well as chairing meetings to ensure that statutory duties are met for the benefit of pupils and federation staff.



Testimonials

Westminster Federation of Special Schools Outreach and Training Services

What do you like in school?



"I do good work in school. I like my teachers and I like Maths"

Amin, 15 years old



"I like reading. I like handwriting. I like play time because I am with my friends"

Annabel, 14 years old



"I like Maths because we sing 'counting by 10s'"

Zakir, 12 years old



"My favourite trip at College Park has been when we went and did acting at the Lyric Theatre. I also liked the Sensory Story and the Christmas Production"

Trevaе, 15 years old



College Park School

Federation of Westminster Special Schools

Prospectus



College Park School

Garway Road, Westminster, W2 4PH

Tel: 0207 221 3454

Fax: 0203 220 0359

Web: www.qe2cp.westminster.sch.uk

Email: admin@qe2cp.westminster.sch.uk